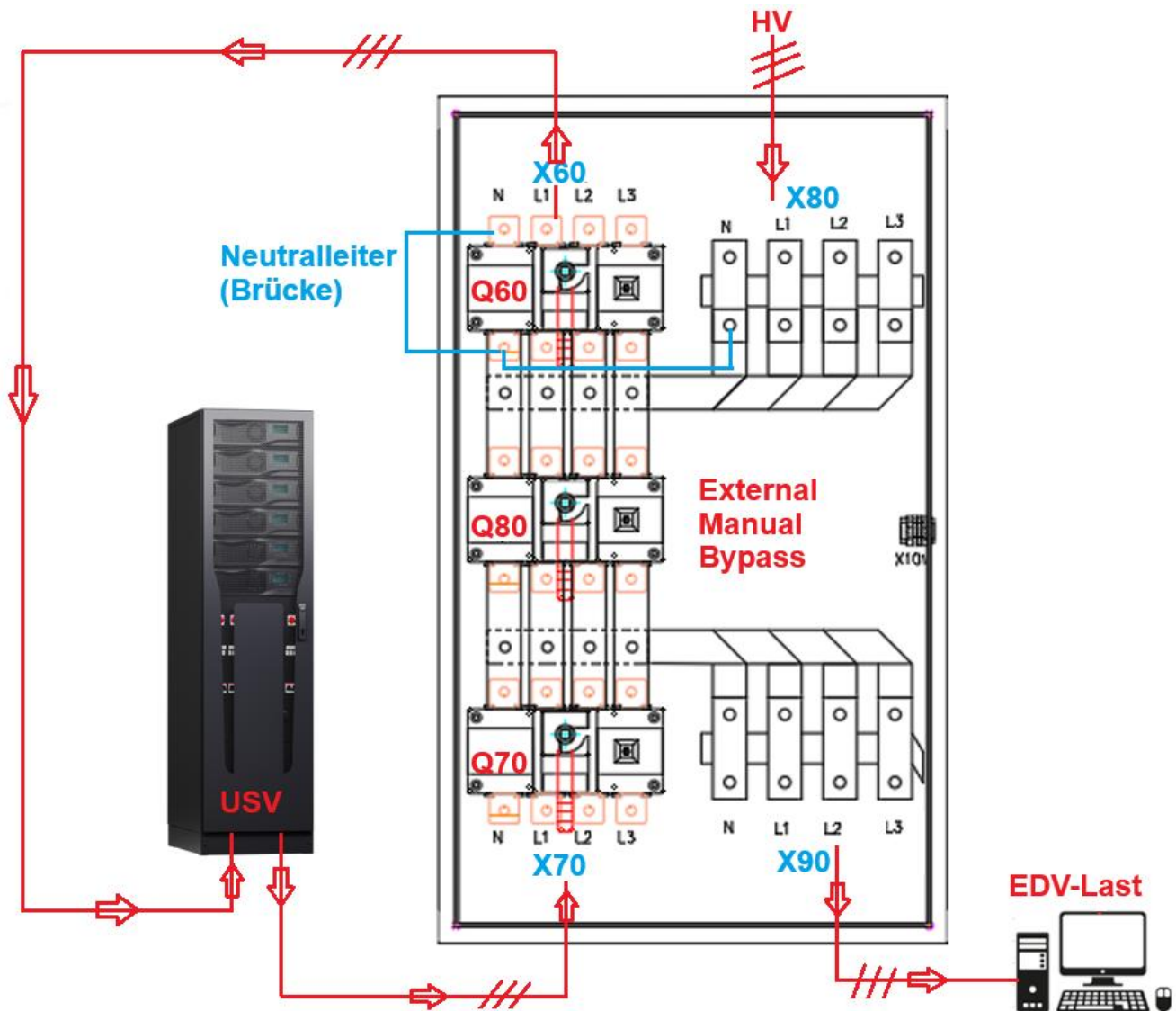
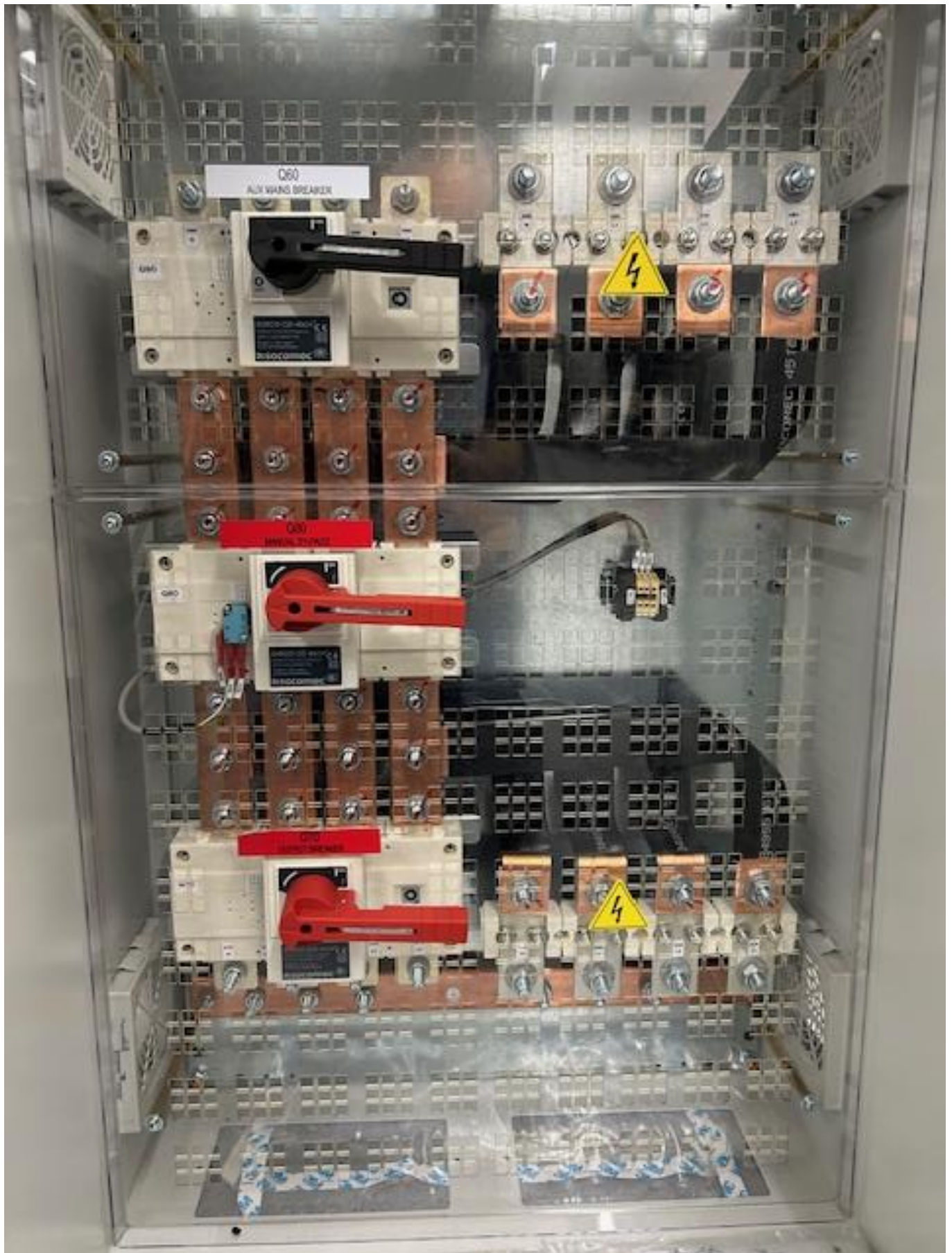


EBP Externer Wartungsbypass 10-120 KVA

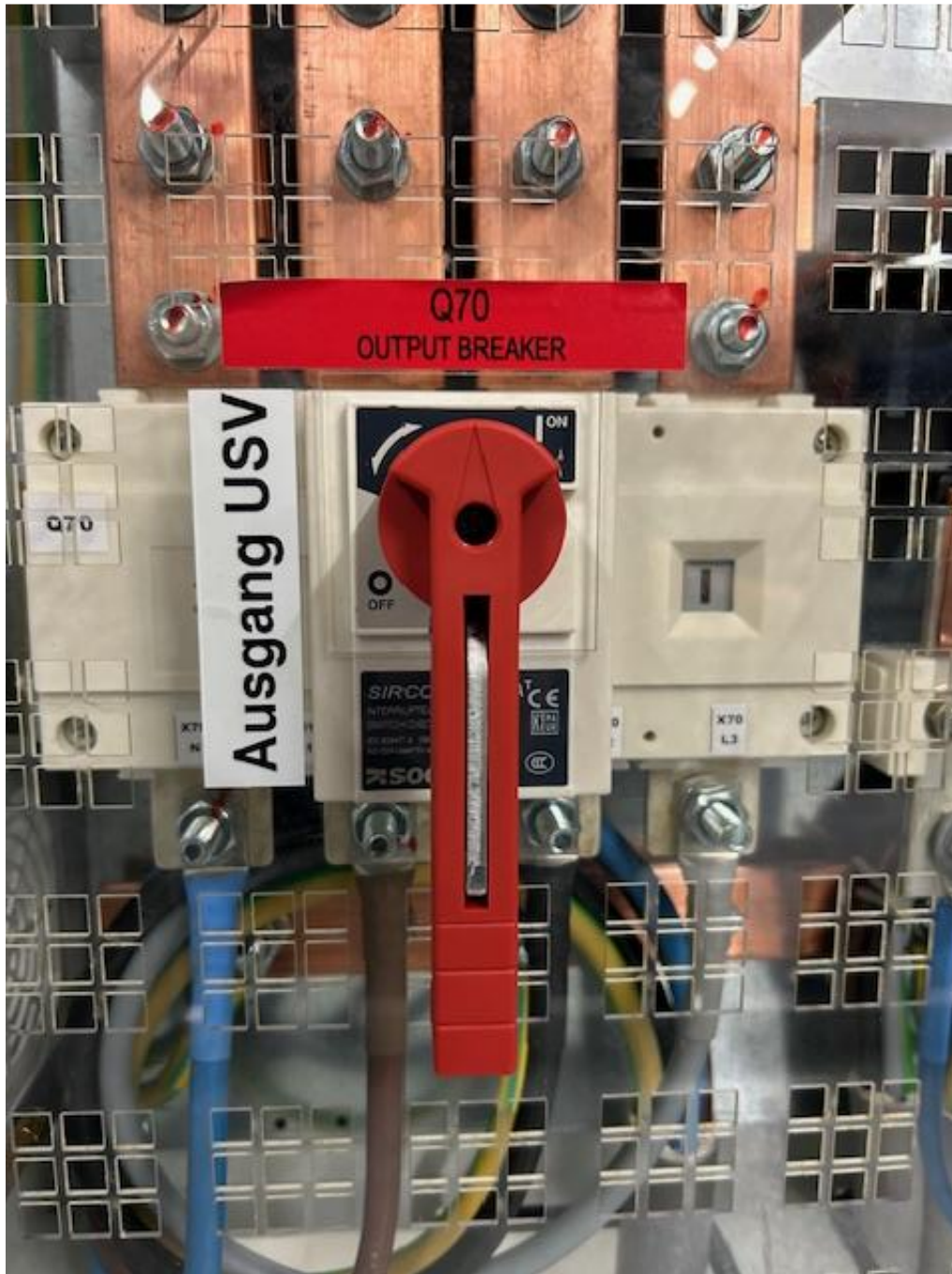




















OPERATION Normal mode > BY PASS U = UPS B = external By Pass	ESECUZIONE MANOVRA Modo normale > BY PASS U = UPS B = By Pass esterno	ACTIVER OPERATION Mode normal > BY PASS U = UPS B = By Pass manuel exteme	UMSCHALTUNG Normalbetrieb > BY PASS U = USV BP = By Pass	TRANSFERENCIA CARGA Modo normal > BY PASS U = UPS B = By Pass externo	
1(U)Select manual By Pass operation on UPS (see Operating Manual) 2(B)Switch ON Q60 3(B)Switch OFF Q60 and Q70	1(U)Eseguiere manovra By pass manuale su UPS (riferimento manuale operativo) 2(B)Chiudere Q60 3(B)Aprire Q60 e Q70	1(U)Activer opération By Pass manuel sur UPS (voir notice d'exploitation) 2(B)Fermier Q60 3(B)Ouvrir Q60 et Q70	1(U)USV auf manuellen By Pass umschalten (siehe Bedienungsanleitung) 2(B)Q60 Schliessen 3(B)Q60 und Q70 öffnen	1(U)Realizar transferencia By pass manual en UPS (consultar manual de instrucciones) 2(B)Cerrar Q60 3(B)Abrir Q60 y Q70	
OPERATION BY PASS > Normal mode U = UPS B = external By Pass	ESECUZIONE MANOVRA BY PASS > modo normale U = UPS B = By Pass esterno	ACTIVER OPERATION BY PASS > Mode normal U = UPS B = By Pass manuel exteme	UMSCHALTUNG BY PASS > Normalbetrieb U = USV BP = By Pass	TRANSFERENCIA CARGA BY PASS > Modo normal U = UPS B = By Pass externo	
1(B)Switch ON Q60 2(U)Select manual By Pass operation on UPS (see Operating Manual) 3(B)Switch ON Q70 4(B)Switch OFF Q60 5(U)Returning to normal mode from Manual By Pass (see Operating Manual)	1(B)Chiudere Q60 2(U)Eseguiere manovra By Pass manuale su UPS (riferimento manuale operativo) 3(B)Chiudere Q70 4(B)Aprire Q60 5(U)Eseguiere manovra di rientro da By Pass manuale (riferimento manuale operativo)	1(B)Fermier Q60 2(U)Activer opération By Pass manuel sur UPS (voir notice d'exploitation) 3(B)Fermier Q70 4(B)Ouvrir Q60 5(U)Selectionner "retour du By Pass manuel" (voir notice d'exploitation)	1(B)Q60 Schliessen 2(U)USV auf manuellen By Pass umschalten (siehe Bedienungsanleitung) 3(B)Q70 Schliessen 4(B)Q60 öffnen 5(U)USV auf Normalbetrieb zurück Chalten (siehe Bedienungsanleitung)	1(B)Cerrar Q60 2(U)Realizar transferencia By Pass manual en UPS (consultar manual de instrucciones) 3(B)Cerrar Q70 4(B)Abrir Q60 5(U)Realizar transferencia a By Pass manual (consultar manual de instrucciones)	
002   SEE INSTALLATION INSTRUCTIONS BEFORE CONNECTING TO THE MAINS	005   BEFORE WORKING ON THIS CIRCUIT - ISOLATE UNINTERRUPTIBLE POWER SYSTEM (UPS) - THEN CHECK FOR HAZARDOUS VOLTAGE BETWEEN ALL TERMINALS INCLUDING THE PROTECTIVE EARTH RISK OF VOLTAGE BACKFEED	006  DO NOT RESTART BEFORE REPLACING THE PROTECTIVE COVERS			

A C H T U N G EINSCHALTEN!!

Manipulation nur instruiert Fachpersonal!!

Bevor auf den externen mechanischen Bypass umgeschaltet wird, muss die USV zuerst auf den internen automatischen Bypass und auf den internen Manual Bypass geschaltet werden!!

